

## INFORMATION FOR PATIENTS ON PUBLIC TRANSPORT AND PARKING IN AND AROUND THE ENHANCED SERVICES CENTRE (ESC)

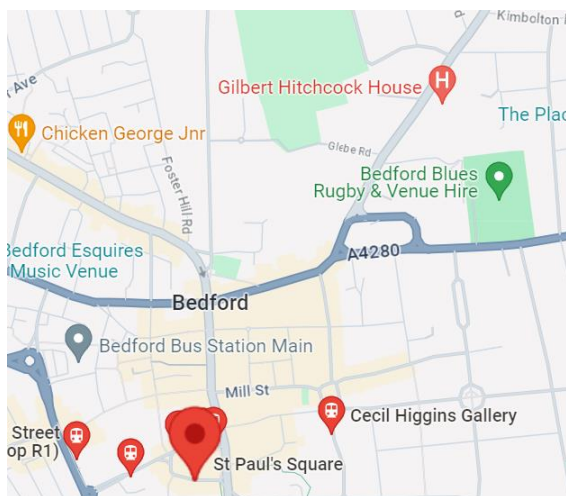
### Public Transport

There is a bus stop on Kimbolton Road directly opposite the ESC at which the following bus services call:

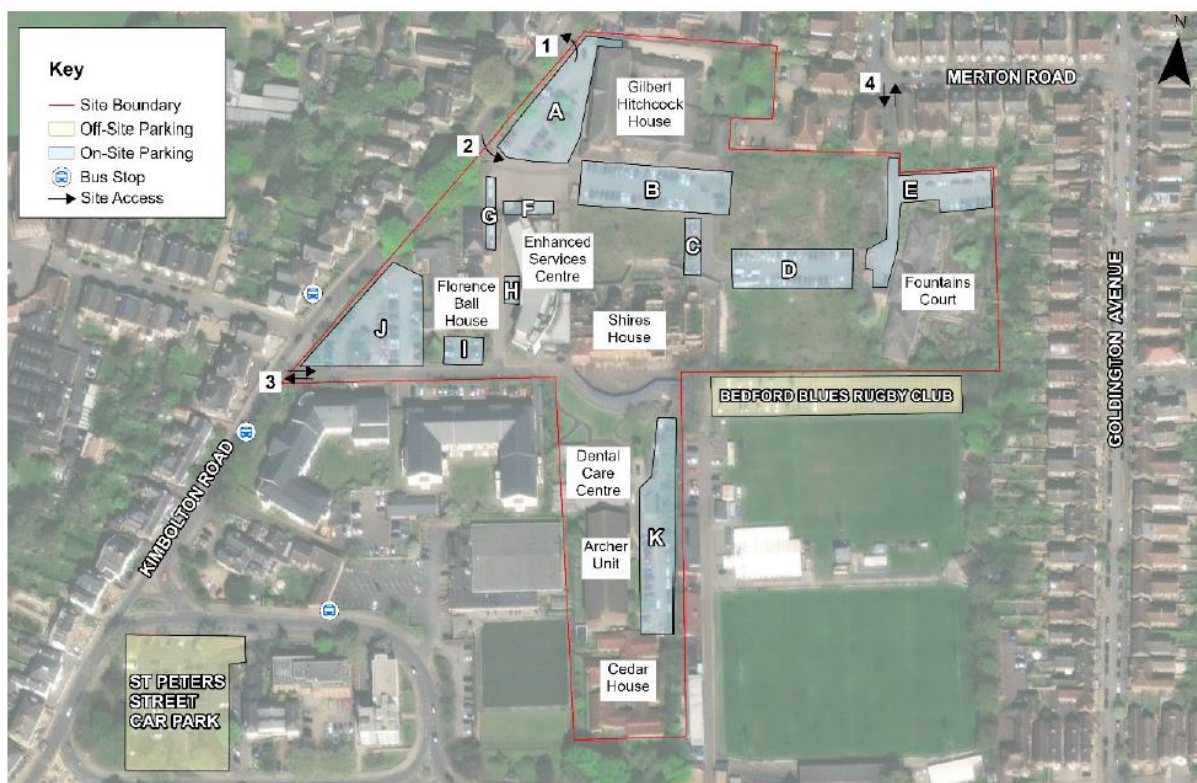
Table 3.2: Local Bus Services

Service	Route	One-way Frequency		
		Mon - Fri	Sat	Sun
7	Bedford - Woodside	Every 30 minutes	Every 30 minutes	Hourly
21	Abbeyfields - Bedford - Woodlands Park	Hourly	Hourly	No service
28	Bedford - Riseley - Kimbolton - Bedford	Every two hours	Every two hours	No service
28A	Bedford - Keysoe - Little Staughton - Colmworth - Bedford	Every two hours	3 services a day	No service
28E	Bedford - Riseley - Bedford	Every two hours	Every two hours	No service

Most local bus services call at St Paul's Square, which is within a reasonable 15 minute walk of the site, via High Street, St Peter's Street and Kimbolton Road. There is good footway and pedestrian crossing provision along this route to reach the ESC:



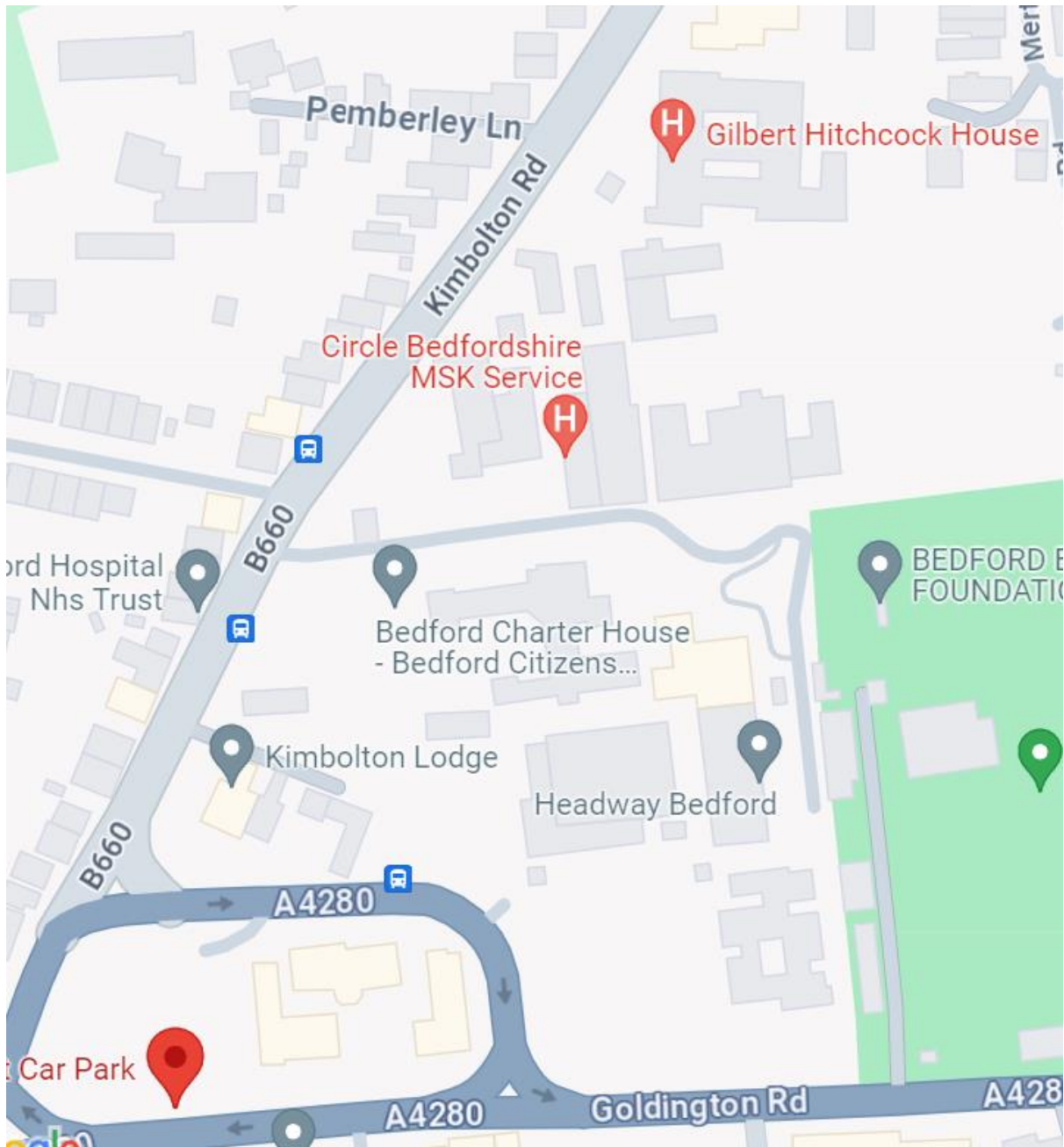
## ON SITE PARKING PROVISION



Location	Number of spaces
A – Front of Gilbert Hitchcock House	34
B	40
C	14
D	41
E – Fountain Court Car park	19
F – Side of ESC	6
G - Front of ESC	5
H – Front of ESC	3
I – Opposite Oak Way	8
J – Front of Florence Ball House	60
K – Southern Campus	35
L – Bedford Blues Rugby Club	95

## OFF SITE PARKING PROVISION

St Peter's Street Car Park (5 mins walk from site) – 113 spaces



On street parking in Oaklands Road and Merton Road where the Controlled Parking Zone is not in force:

